

**2024 - 2025 Donations by Auxiliary:** \_\_\_\_\_

<b>GRAND CHARITIES</b>	<b>Amount</b>
The Fraternal Order of Eagles Diabetes Research Center	\$
Children's Fund	\$
Cancer Fund (GMP Charity)	\$
Heart Fund	\$
Spinal Cord Injury Fund	\$
Kidney Fund	\$
Diabetes Fund	\$
Alzheimer's & Neurological Fund	\$
Parkinson's Fund	\$
Golden Age Fund	\$
F.O.E. Exoskeleton Project	\$
Memorial Foundation	\$
Eagle Village	\$
Bridge to the Cure	\$
GMP's Special Project: Camp Enchantment	\$
<b>STATE CHARITIES</b>	
Arthritis Foundation	\$
Home on the Range	\$
Make-a-Wish	\$
Cystic Fibrosis Foundation	\$
Confidence Learning Center	\$
Autism Society of Minnesota	\$
5th District Cancer Telethon	\$
St. Jude Children's Research Hospital (SMP Charity)	\$
<b>TOTAL</b>	\$

## LOCAL CHARITIES

Amount

\$

\$

\$

\$

\$

\$

\$

\$

\$

\$

\$

\$

\$

\$

\$

\$

\$

\$

\$

\$

\$

**TOTAL**

\$

# **Grand Madam President Mary Gutierrez Charities**

## **F.O.E. Charity Foundation Cancer Fund**

Mary will be raising money throughout the year for cancer research through the Fraternal Order of Eagles Charity Foundation Cancer Fund.



## **Camp Enchantment**

Camp Enchantment is a week-long camp in New Mexico for children with cancer or in cancer survivorship. It offers respite for campers and their families through various activities and support from a dedicated team of volunteers.

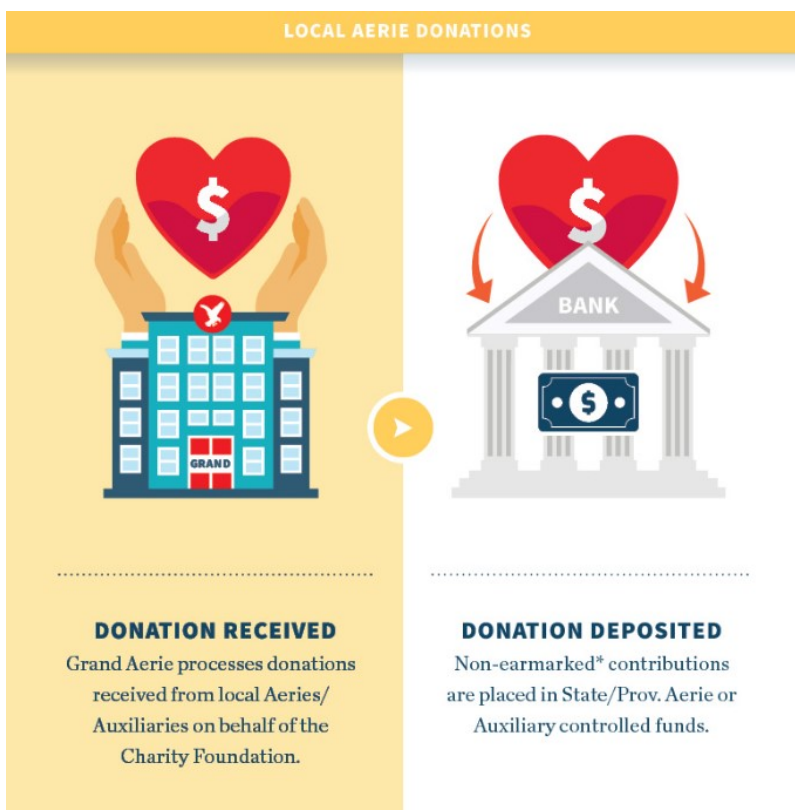
All donations can be sent to:  
F.O.E. Charities Department  
1623 Gateway Circle S.  
Grove City, Ohio 43123

Please make checks out to F.O.E. Charity Foundation and put GMP - Cancer Fund or GMP - Camp Enchantment in the memo line.

# F.O.E. Charity Foundation

The F.O.E. Charity Foundation hosts a variety of funds - each dedicated to a specific cause - which collect donations from our nearly 3,000 Aeries and Auxiliaries for the purposes of awarding grants to local and/or international organizations dedicated to research and patient care.

In compliance with our promise to use 100% of all donations for the intended purpose, grant recipients are required to prove that no portion of the grant received will be used to fund administrative costs.



The Fraternal Order of Eagles works hard to raise millions of dollars each year for a variety of causes. If you would like to make a donation to one of the many funds contained within the F.O.E. Charity Foundation, please send your donation to:

***F.O.E. Charity Foundation  
1623 Gateway Circle South  
Grove City, OH 43123***

All checks should be made payable to F.O.E. Charity Foundation with the designated fund labeled in the MEMO line.

Donations for the F.O.E. Memorial Foundation or Eagle Village MUST be addressed to either the Memorial Foundation or Eagle Village. Checks made payable to Charity Foundation for the intended purpose of benefiting either Memorial Foundation or Eagle Village WILL be returned.

If you have questions regarding the F.O.E. Charity Foundation, contact [charities@foe.com](mailto:charities@foe.com) or call 614.883.2200.

# THE FRATERNAL ORDER OF EAGLES

## DIABETES FUND



The diabetes fund began in 1978 as diabetes grew in prominence. To date, millions of dollars in grants have been issued by the Eagles for research and to provide organizations with upgraded resources to better treat the disease.



# THE FRATERNAL ORDER OF EAGLES

## CHILDREN'S FUND



Each year, the F.O.E. provides several hundred thousand dollars in grants to children's hospitals, child abuse prevent organizations, special needs groups, and more, which impact lives through groundbreaking medical research and patient care operations.



## CHARITY FOUNDATION

# THE FRATERNAL ORDER OF EAGLES

## SPINAL CORD INJURY FUND



The Spinal Cord Injury Fund serves as an outlet for assistance to groups aiding citizens suffering from spinal cord-related injuries. The fund has benefited rehabilitation programs, the creation of special braces to combat scoliosis, and robotic exoskeletons, to the tune of over \$200,000 annually.



## CHARITY FOUNDATION

# THE FRATERNAL ORDER OF EAGLES

## PARKINSON'S FUND



Involvement with Parkinson's fundraising began through the Golden Age Eagle Fund and grew to become its own fund, dedicated to the research and prevention of Parkinson's Disease.

Each year, treatment centers and research facilities receive aid from the F.O.E. to help make life easier for those suffering from the debilitating disease.



## CHARITY FOUNDATION

## CHARITY FOUNDATION



# THE FRATERNAL ORDER OF EAGLES

## HEART FUND



Heart Disease affects millions of individuals throughout the world each year. Since 1959, the Eagles have maintained a fund dedicated to providing research grants and aid for defibrillators, tools benefiting heart disease patients and more, to the tune of more than \$300,000 annually.



## CHARITY FOUNDATION

# THE FRATERNAL ORDER OF EAGLES

## GOLDEN AGE FUND



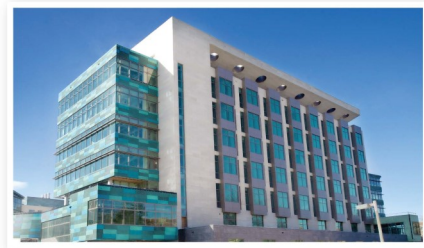
After a unanimous vote during the 1971 Convention, the Golden Age Fund was created with a promise to provide assistance for programs to improve the lives of senior citizens. The Fund was inspired by the Eagles' role in the passing of the Social Security Act, the Jobs After 40 Program, Medicare and other national initiatives promoting the wellbeing of seniors.



## CHARITY FOUNDATION

# THE FRATERNAL ORDER OF EAGLES

## F.O.E. DIABETES RESEARCH CENTER



On the University of Iowa's medical campus sits the centerpiece of the Eagles' charitable efforts – The Fraternal Order of Eagles Diabetes Research Center.

The facility inhabits 30,000+ square feet of cutting edge medical research space with more than 100 doctors working daily to bring us one step closer to a cure for diabetes. Research was made possible by a \$25 million gift from the Fraternal Order of Eagles.

## CHARITY FOUNDATION

# THE FRATERNAL ORDER OF EAGLES

## CANCER FUND



Founded in 1959, the Cancer Fund impacts the lives of those suffering through aid to various cancer research, care and prevention programs. Every year, more than \$300,000 in grants are distributed to teach methods for cancer prevention, assist citizens battling the disease and develop new treatment technology.



## CHARITY FOUNDATION

# THE FRATERNAL ORDER OF EAGLES

## ALZHEIMER'S/ NEUROLOGICAL FUND



The Eagles' Alzheimer's efforts began in 1985 when the use of Golden Eagle funds to issue grants was approved, leading to a separate fund. In 2015, the Alzheimer's Fund was expanded to include all Neurological disorders, including Autism, Post-Traumatic Stress Disorder (PTSD) and more.



# THE FRATERNAL ORDER OF EAGLES

## KIDNEY FUND



The Kidney Fund began 1978, after members expressed a desire for an outlet to fund kidney-related treatment and research programs. Through the fund, hospitals and treatment facilities have been able to purchase innovative dialysis equipment, rehabilitation technology and other tools which aid in patient care.



## Memorial Foundation

Part of being an Eagle is supporting our brothers and sisters when times get tough. The Memorial Foundation was created to help provide medical and educational benefits to children of members who lose their lives while serving their country or while at work. As an Eagle in good standing, you and your family are automatically protected by this unprecedented safety net.



EDUCATIONAL GRANTS



MEDICAL BENEFITS



DENTAL BENEFITS



OPTICAL CARE



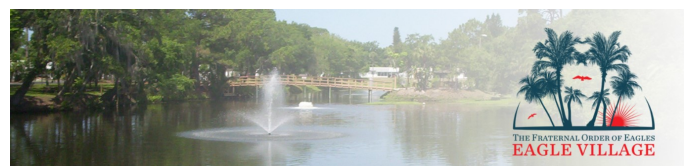
PSYCHIATRIC CARE



HOSPITALIZATION

## Eagle Village

Within beautiful Bradenton, Fla., lies Eagle Village– a 26-acre complex featuring 85 living units open to members of the Fraternal Order of Eagles with at least 10 years of continuous membership. Amenities include a library, recreation center, town hall, pool, gym, shuffleboard court and a three-acre lake with private lighted paths, allowing residents to enjoy long walks or bike rides at any hour. Members are encouraged to support Eagle Village through donations. For a nominal donation, any Eagle member can utilize one of the Village's fully-equipped cottages for up to two weeks per-year when vacancies allow.



# F.O.E. Exoskeleton Project

As of 2009, there were 42,000 Veterans receiving medical care for spinal cord injuries (SCI) from the VA in this country. These men and women volunteered to serve their country and were severely wounded in combat. Now, we have the opportunity to do something to give back. Something that will allow them to stand up and walk. Something that will allow them to stand up and give their loved ones a proper hug and kiss. Something that will extend their lives and reduce their medical problems and expenses for the rest of their lives. Take a minute to watch the video above to fully understand the impact the bionic exoskeleton equipment can have on these brave men and women, their spouses and their children.

## BENEFITS OF USING THE EXOSKELETON

- ✦ Better bowel and bladder function. This will help reduce urinary tract infections, a common problem for people in wheelchairs.
- ✦ Physiological and psychological gains.
- ✦ The increased movement of muscles.
- ✦ Prevents joints from locking and growing together
- ✦ Pressure sores are relieved and avoid becoming infected. Skin Breakdowns are reduced.
- ✦ Digestive system shows improvements.

Please schedule a Spinal Cord Injury benefit at your Aerie and make it a point to invite and include your local Veterans groups. Then invite them to become members. Be sure to play this video at your fundraiser so everyone can see the benefits to the users of this equipment. When your event is complete, please send the funds raised to the Grand Aerie and earmark them for "Spinal Cord Exoskeleton Fund". Each time enough funds are raised, we will purchase another unit for a rehab facility where Veterans and other spinal cord injury patients will receive use of it. The Fraternal Order of Eagles will work in conjunction with Ekso Bionics to identify medical facilities with the space and staffing requirements necessary to facilitate use of the device.

---

To date, the F.O.E. has donated six Ekso GT suits throughout the United States. Facilities currently utilizing suits donated by the F.O.E. include:

- ✦ Minneapolis Veterans Affairs Hospital, Minneapolis, Minnesota - Since May 2016
- ✦ Long Beach Veterans Affairs Hospital, Long Beach, California - Since March 2017
- ✦ CHI Health System, Omaha, Nebraska - Since August 2017
- ✦ Younker Rehabilitation Center, Des Moines, Iowa - Since July 2018
- ✦ Omaha Methodist Hospital, Omaha, Nebraska - Since June 2021
- ✦ Bryan Health, Lincoln, Nebraska - Since August 2021





Arthritis Foundation  
8362 Tamarack Village  
Suite 119-465  
St. Paul, MN 55125

For over seven decades, the Arthritis Foundation has led the fight to conquer arthritis for nearly 60 million adults and 300,000 children living with the disease in the U.S. The Arthritis Foundation is boldly pursuing a cure for America's #1 cause of disability while championing the fight to conquer arthritis with life-changing science, resources, advocacy and community connections.

Facts:  
Management—10%  
501(c)3—58-1341679

“Giving is not just about making a donation. It is about making a difference.” – Kathy Calvin

Rainbow Health responds to the health needs of Minnesota’s LGBTQ+ and HIV-affected communities. For nearly 40 years we have been advocating for and serving the LGBTQ+ community, those living with HIV, and all folks facing barriers to equitable healthcare. Since our formation through the Minnesota AIDS Project and Rainbow Health Initiative merger—and later the acquisition of Training to Serve—we have continued to grow and identify new ways to commit to our mission.

Facts:  
Management—8%  
501(c)3—41-1524746



Rainbow Health  
701 4<sup>th</sup> Ave  
Suite 1500  
Minneapolis, MN 55415



Cystic Fibrosis Foundation  
Minnesota Chapter  
100 N 6<sup>th</sup> St.  
Suite 604a  
Minneapolis, MN 55403

The mission of the Cystic Fibrosis Foundation is to cure cystic fibrosis and to provide all people with CF the opportunity to lead long, fulfilling lives by funding research and drug development, partnering with the CF community, and advancing high-quality, specialized care. We fund more innovative, ground-breaking cystic fibrosis research than any other organization in the world.. We provide expert care for people with CF through our nationwide network of accredited care centers. We help people with cystic fibrosis and their families get the tools and support they need to lead healthy lives today.

Facts:  
Management—3%  
501(c)3—13-1930701

— [ 'Think of giving not only as a duty but as a privilege' - John Rockefeller ] —

Minnesota's First Autism Resource: In 1971, a group of passionate parents founded AuSM to seek greater understanding and better school supports for their children with autism. A half-century later, AuSM continues its mission to improve the lives of people with autism, but with an expanded focus along the entire lifespan, from birth through retirement. Whether you are the parent of a child with a new diagnosis, an adult with autism who needs guidance, an educator or healthcare professional who supports people with autism, or a company that wants to learn more about the talents of people with autism, AuSM offers the resources you need to help you accomplish your goals.

Facts:  
Management—11%  
501(c)3—41-1718029



Autism Society of Minnesota  
2380 Wycliff St. #102  
St. Paul, MN 55114



Home on the Range  
1635 I-94  
Sentinel Butte, ND 58654

Home On The Range is a therapeutic working ranch located in western North Dakota. The facility provides education, therapy, spiritual guidance, and recreational and work activities. Service to children and families, leadership in the child care field, and conviction to make a healthier and stronger world, characterize the philosophy of Home On The Range. This philosophy is built on a foundation of Catholic values and their mandate to bring healing and strength to wounded families and children. Home On The Range serves children and families regardless of race, color, creed, religion, or national origin.

Facts:  
Management—%  
501(c)3—45-0230083

“No one is useless in this world who lightens the burdens of another”—Charles Dickens

Confidence Learning Center began in April of 1969 when Dick Endres (Camp founder), a small group of local businesspeople, and many individuals from the Brainerd State Hospital combined their energies to form Minnesota Therapeutic Camp, now known as Confidence Learning Center. From that day forward, Camp has grown incredibly both in numbers of campers and facilities. Located in the beautiful Brainerd Lakes Area of Minnesota, Confidence Learning Center (otherwise known as Camp Confidence) specializes in outdoor education and experiences for persons with developmental and cognitive disabilities— along with the deaf and hard of hearing communities.

Facts:  
Management—13%  
501(c)3—41-0985513



Confidence Learning Center  
1620 Mary Fawcett Memorial Dr.  
East Gull Lake, MN 56401



5th District Eagles Cancer Telethon  
Attn: Ellie Koepp  
308 Houston Ave  
Crookston, MN 56716

The Fifth District Eagles Cancer Telethon was established in 1954 with the primary objective of raising funds for cancer-related causes. As the oldest locally-run telethon in the United States, this event has maintained a longstanding tradition of contributing to the fight against cancer. It has forged a close and enduring partnership with KTTC, ensuring the annual broadcast of the Eagles Cancer Telethon. Over the span of 70 years, the telethon has garnered the dedicated support of more than 12,000 volunteers, making it a remarkable testament to the community's commitment to this noble cause.

Facts:  
501(c)3—41-1419117

— [ “No act of kindness, however small, is ever wasted” - AESOP ] —

Since 1982, Make-A-Wish Minnesota has granted more than 6,000 wishes to create hope, strength and joy for wish kids, their families and entire communities. While Make-A-Wish is a national organization, our Minnesota chapter is “small but mighty” with a staff of 20 and a core of 460 dedicated volunteers. We take our responsibility for financial donations made very seriously and rely solely on charitable giving to grant wishes for Minnesota children with critical illnesses statewide.



Make-A-Wish of Minnesota  
1919 University Ave West #415  
St. Paul, MN 55104

Facts:  
Management—19%  
501(c)3—41-1422893